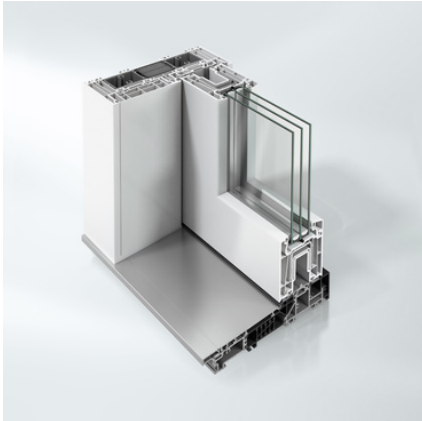


Schüco ThermoSlide



DESCRIPTION

PRODUCT BENEFITS

82 mm vent frame with 5 chambers
219 mm outer frame profile with 7 chambers guarantees maximum operational reliability
Maximum thermal insulation with a U_f value of 1.1 W/(m²K)
Triple thermally broken threshold
Vent weights up to 400 kg possible
A version to RC2 (test pending) is also available for increased security requirements
Narrow face widths ensure maximum light penetration
Excellent sound reduction values
A supplementary profile makes a (true) easy-access design possible

GALLERY

+

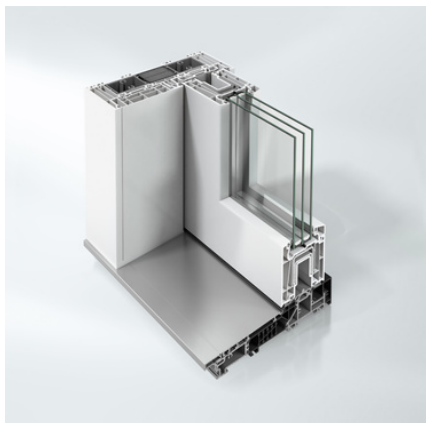
DOCUMENTATION

+

TECHNICAL INFORMATION

+

Schüco ThermoSlide



DESCRIPTION

PRODUCT BENEFITS

The Schüco ThermoSlide PVC-U lift-and-slide door system is based on the 82 mm Schüco Corona SI 82 system, in which the frame has a system basic depth of 219 mm. The triple thermally broken lift-and-slide door threshold and the thermally broken frame reinforcement achieve excellent thermal insulation and isothermal flows.

This is supported by the frame profile enclosing the vent frame. The PVC-U lift-and-slide door system Schüco ThermoSlide is equipped with newly developed anti-friction gaskets for improved durability and weather tightness.

Integration in the Schüco colour range with a large selection of woodgrains and single colour decorative foils means an almost unlimited choice of colours.

Thanks to the high level of system compatibility, windows and doors can be designed uniformly.

GALLERY

+

DOCUMENTATION

+

TECHNICAL INFORMATION

—

SYSTEM / MATERIAL	PVC
ENERGY	Highly thermally insulated
Opening option	Lift-and-slide system
Uf-value	1.2
Max. glass thickness	52 mm
Basic depth	219 mm
Vent weight	400 kg
Opening option	Lift-and-slide vent
Burglar resistance	RC2
Surface finishes	TopAlu / Decorative foils
Ideal for	Terraces / balcony glazing / conservatory